



Welcome aboard
Ship details



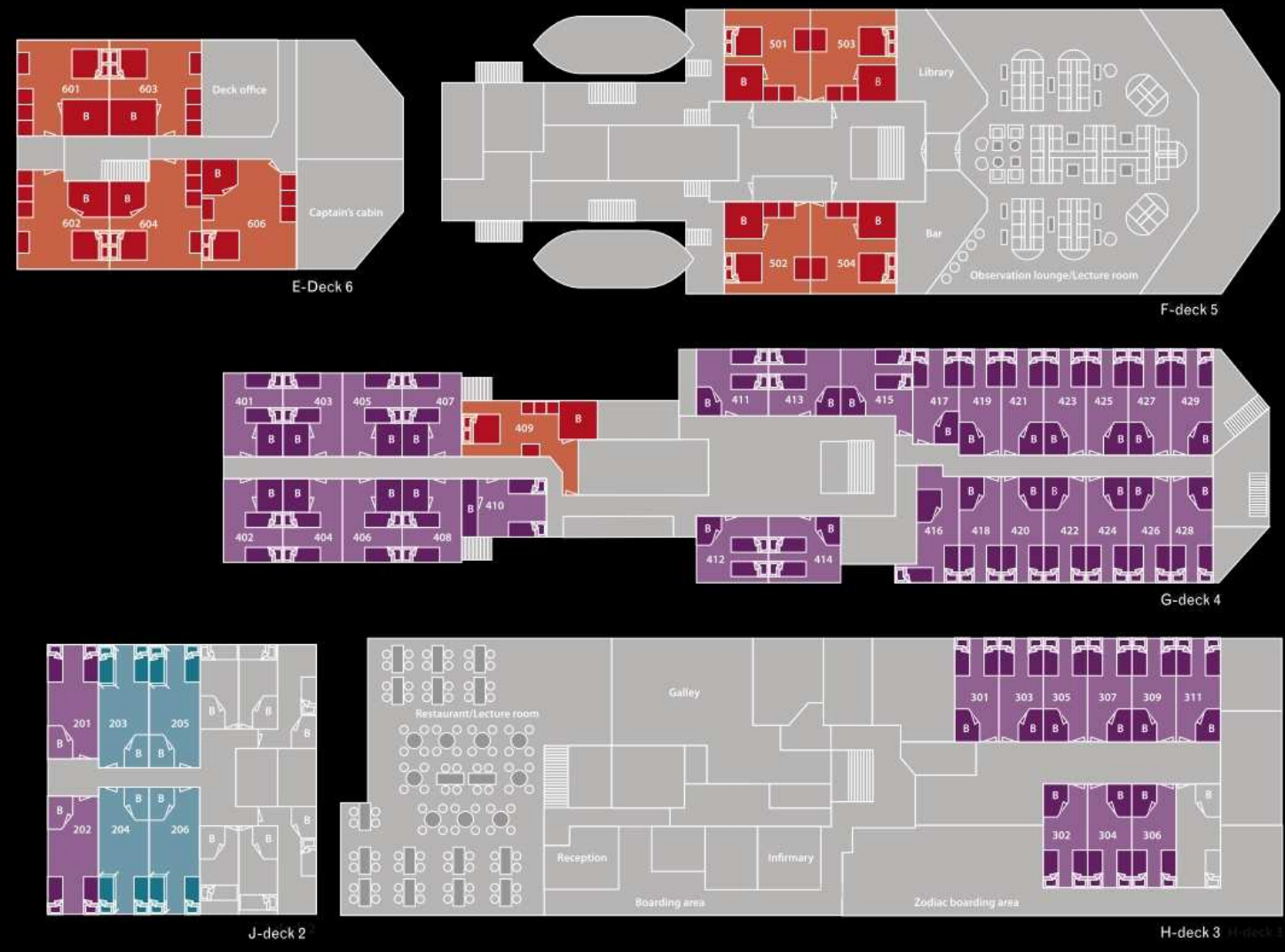
**OCEANWIDE
EXPEDITIONS**



m/v Plancius

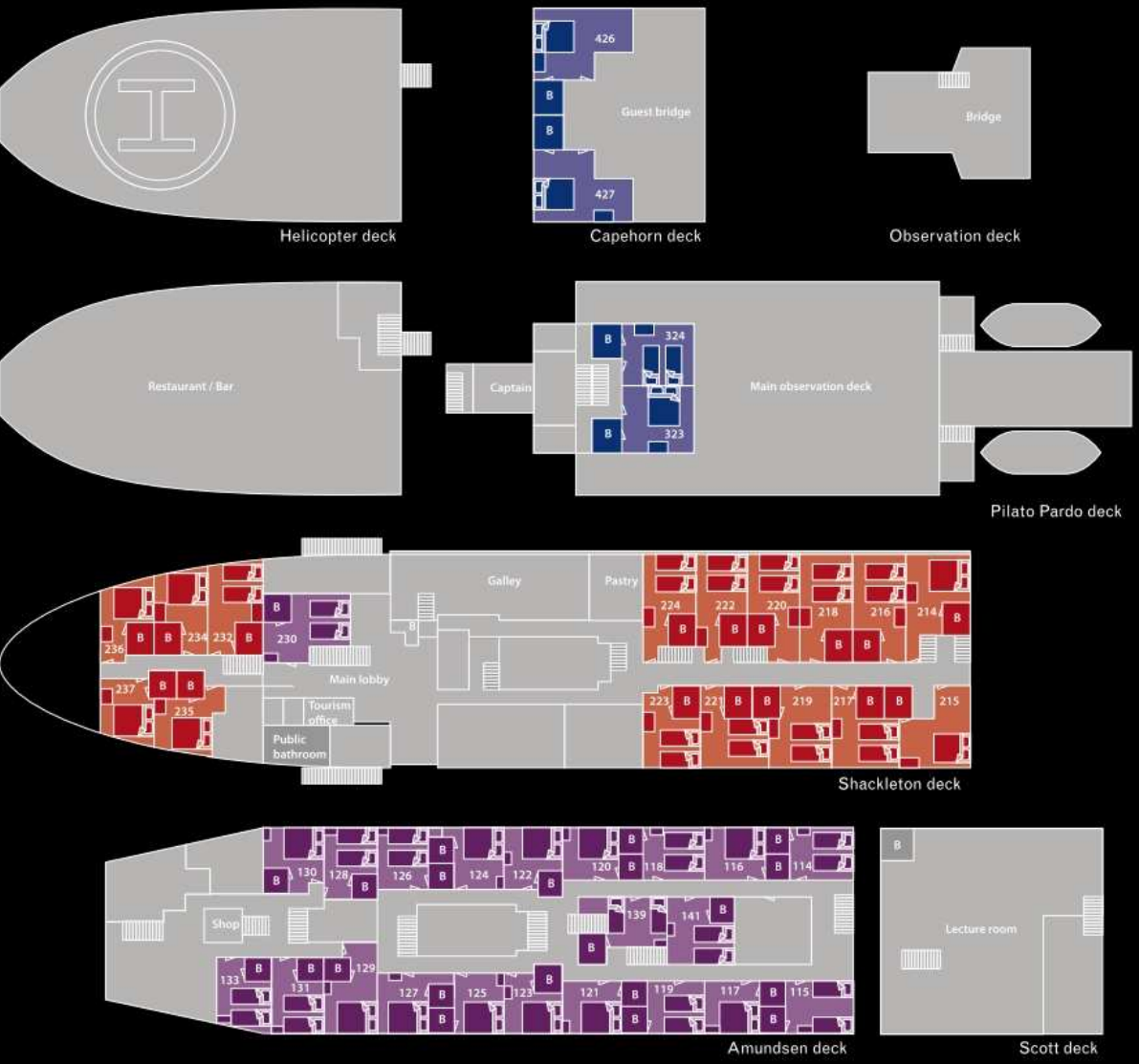


- Length: 89 metres (267 feet)
- Breadth: 14,5 metres (43 feet)
- Draft: 4,5 metres (15 feet)
- Speed: 10 - 12 knots
- Capacity: 110 passengers
- Nautical crew: 17
- International expedition staff: 8
- International hotel & catering staff: 19
- Emergency doctor: 1



m/v Plancius deckplan

	superior		lower berth		B Bathroom
	twin with private facilities		upper and lower berth		
	triple with private facilities		double bed		



m/v Antarctic Dream



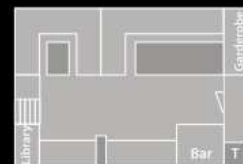
- Length: 83 metres (274 feet)
- Breadth: 12 metres (39 feet)
- Draft : 4,6 metres (15 feet)
- Speed: 10-12 knots
- Capacity: 84 passengers
- Nautical crew: 18
- International expedition staff: 5
- International hotel & catering staff: 11
- Emergency doctor: 1



s/v Noorderlicht



Length: 46 metres (153 feet)
Breadth: 6,5 metres (22 feet)
Draft: 3,2 metres (11 feet)
Speed: 7 knots
Capacity: 20 passengers
Dutch sailors: 3
Cook: 1
Expedition leader: 1



Deckhouse



below deck

s/v Noorderlicht deckplan

 twin without facilities	 upper and lower berth	 Toilet
		 Shower





Design: Peter van Lent and Marloes Tiggeloven
Photographs: Arjen Drost, Francois Deriberolles, Frits Steenhuisen,
Rolf Stange, Remy Marion, Jan Houter, Michel van Gessel,
Rinie van Meurs and Jan Belgers, Hans Heuvel, Monica Salmang
Version: 16 November, 2009



**OCEANWIDE
EXPEDITIONS**