

INTRODUCTION

Antarctica Expedition Cruises 2012 / 2013

Antarctic Peninsula - Falkland Islands - South Georgia

Atlantic Odyssey – Pelagic West Africa

Itinerary

All promoted itineraries are for general guidance only. Programs may vary depending on local ice and weather conditions and ad hoc decisions by the Expedition Leader to take advantage of opportunities to see wildlife. Flexibility is paramount for expedition cruises. Landings are always subject to weather, local site availabilities and environmental regulations (IAATO). *Official sailing plans and landing slots will be scheduled with IAATO approximately 5 months prior to the start of the season. The final sailing plan will be determined by the Expedition Leader on board. The implementation of the sailing plan is subject to the capability of the vessel and the discretion of the Master.* Taking the exorbitant high fuel prices into account, it is agreed that Oceanwide Expeditions has the right to reduce the speed of the engines (including sailing on one engine) wherever possible, unless this affects the character of the intended voyage substantially and jeopardizes the safety of the vessel, its crew, staff and passengers.

Rubber Boots and Expedition Jackets

Onboard Plancius all passengers are entitled to use a pair of sturdy rubber boots for free. Sizes need to be pre-ordered with Oceanwide reservation departments at least 8 weeks prior to departure. A voucher will be sent with final travel documents approximately 4 weeks prior to departure. Laying claims on equipment items without pre-order and voucher can not be accepted when boarding the vessel. Boots will need to be returned to the expedition team at the end of the voyage. Rubber boots are of high quality, keeping your feet dry, warm and comfortable for all landings. Expedition jackets can also be pre-ordered for a special price. Terms and conditions are available on the pre-order form.

Shore Excursions and Zodiac Cruising

Guided shore excursions, walks and wildlife spotting and zodiac cruising are included in the fare and will be offered to all passengers during the voyages. We put our emphasis on active wildlife and nature experiences.

Basecamp Plancius – Our activity base (C H K M P)

The ship becomes our base camp on selected dates. “Base camp” is by definition a temporary storing and starting place, from which an activity starts, in this instance a “coast to mountain” expedition. During designated “Basecamp Plancius” voyages the ship will be taken to carefully chosen places in the Antarctic. The vessel will stay for two or three days at specific locations to serve our active passengers as a comfortable hub to allow more time than usual for wide ranging activities: mountaineers (M) and hikers (H) to climb mountain ranges, photographers (P) to explore photo opportunities, campers (C) to enjoy life at shore base camps, kayakers (K) and zodiac passengers to explore near shores where the ship cannot go. Passengers who do not wish to become physically active will enjoy our zodiac excursions and follow the normal shore program and land excursions (easy to moderate walks and hikes with focus on wildlife). We also offer photo workshops. All adventure activities are free of charge.

Bilingual voyages (b): English-French or English-German

English is the ship’s language. Some German or French speaking expedition staff will be onboard for designated bilingual voyages (English–German or English-French). Welcome and safety briefings, announcements, daily briefings, and recaps will be provided in English and German/French. English and German/French lectures may vary in content. Simultaneous translations of lectures will not occur but a summary in the second language may be given at the end of a lecture. Guidance during activities ashore will depend on the group each passenger chooses according to their own physical ability. Passengers will be split up in interest groups whenever needed, i.e. activity voyages: longer walks (faster-paced group) and a leisurely walk (slower-paced group) in the vicinity of the landing beach (more time for photography). A German or French speaking staff member will not necessarily be available for each group. During Zodiac cruises, each boat’s driver/guide will not necessarily be bilingual.

INTRODUCTION

Camping (C)

On some Antarctic voyages we offer an exciting 'open air' camping option, which gives an intensive experience of the Antarctic wilderness. Special gear and field equipment will be provided: tents, wind and waterproof bivouac bags (lightweight alternative to a tent system). This shelter will protect you from the elements during the night in the open air of Antarctica. Mattresses and polar sleeping bags provide comfort during the night. The maximum number of participants for this camping option is 30 participants per night. One expedition guide will conduct the activity ashore. Camping is always subject to weather, local site and environmental regulations. 1 night has to be booked prior to the trip; any extra nights (if those are possible) must be arranged onboard. There is no guarantee that a second night can be implemented. Additional nights will be charged by the Hotel Manager. For more details please refer to the activity manual.

Diving (D)

Divers must be advanced and experienced in dry suit and cold water diving. We hope for 1-2 different dives per day parallel to all other activities. Diving depends on local ice and weather conditions. Dive masters and dive guides are responsible for safety during operation. Basic equipment is onboard (scuba tanks, compressors, weights and diving essentials). Divers bring their personal gear. A supplement will be charged for the activity package. For prices please refer to Dates & Rates. For more details please refer to the activity manual.

Hiking (H)

During voyages with hiking options we hope to be able to exceed on our normal shore excursion walking Program. The possibilities to hike longer distances in de Antarctic are limited by mountains and glaciers. In general the longest hikes can last up to two hours. We aim at one or two hikes per day during morning and / or afternoon landings. The final decision on those hiking options will be met by the Expedition Leader on the day of the excursion. We recommend bringing a proper pair of ankle high hiking boots (illustration in Basecamp activity selection form) and gaiters. Hiking is free of charge; more details can be found in the activity manual and the day by day Programs.

Kayaking (K)

In general we plan to at least offer 4 kayaking days. Basic kayaking experience is required and physical fitness is essential. Parallel to all other activities we are planning on offering kayaking excursions during morning and / or afternoon landings. The final decision on those excursions will be met by the Expedition Leader. Oceanwide will provide kayaks, neoprene wet suits, booties and gloves. Kayakers will bring their own personal gear. Kayaking is subject to weather and prevailing ice conditions. A supplement will be charged for the activity package (except "Basecamp Plancius" voyages). For prices please refer to Dates & Rates. For more details please refer to the activity manual.

Photo workshop (P)

On selected voyages and "Basecamp Plancius" voyages Oceanwide Expeditions is going to offer photo workshops for beginners and advanced photographers under the supervision of a photo expert on board. Everybody is welcome to participate, no previous experience required. The workshop group (up to 20 participants per guide per landing, and up to 14 participants per guide on supplemented voyages) will be accompanied by the photo expert during activity ashore. Participants with a special interest in photography will bring their personal photo equipment. During cruise days everybody will be able to listen into photo lectures and workshops in order to learn more about objects, exposures and photo composition. The workshop does not intend to instruct on how to use specific camera models, but more to give an insight on better photo results by respecting basic rules of photography. Photographers can also take part in other activities of their choice. Photo workshops are free of charge on Basecamp voyages, and supplemented on other activity coded voyages. The photo workshop must be pre-booked with Oceanwide's reservation departments prior to departure.

Character of photo workshops: Basecamp Plancius and other non supplemented voyages: free "try out" activity for everybody, participants also dip into other activities, group size up to 20 participants per photo guide and landing, daily changing groups, workshop content not too specialised, target group "beginners to experts" who wish to receive daily photo tuition. During photo workshops powered by Leica Akademie (see attached dates & rates), participants can test Leica camera equipment free of charge.

Activity coded & supplemented voyages: Leica Akademie photo workshop, up to 14 participants will be instructed by a photo guide lecturer of Leica Akademie, homogeneous group, progressive workshop sessions specialise on improving specific photo skills, Leica photo equipment can be tested (cameras and objectives), target group "experts and those who want to become experts".



OCEANWIDE
EXPEDITIONS

Day by Day Itinerary

INTRODUCTION

Snowshoeing/hiking (S)

Especially on early departures at the beginning of the season there are still snow covered hills and mountains further inland. During voyages to the Antarctic we are planning on offering hiking excursions with snowshoes. Snowshoe walking is easy and does not require any technical skills. With the use of snowshoes it is easier and safer to walk on snow surfaces. Snowshoes will be provided to everyone on board. Those will fit all boot sizes and can be used in combination with Oceanwide's rubber boots. Snowshoe hiking is free of charge; more details can be found in the activity manual and the day by day programs.

Ski Trekking (T) – Shackleton Traverse

A group of up to 12 ski trekkers will pull their own sledge (approx. 30 - 35 kg) with personal and shared equipment (food, stoves, fuel) in challenging mountainous terrain. The sledge can be carried as a backpack on stretches without snow. Ski trekking involves elements of ski mountaineering, glacier travel and winter camping. In general participants must be physically conditioned and experienced in order to participate in this strenuous exercise in alpine environments facing sometimes extreme weather. In addition, ski trekkers must be familiar with skiing and crevasse rescue techniques which can be learned in Alpine Introductory Courses. The group will access sometimes difficult, glaciated, heavily crevassed and potentially hazardous alpine terrain. There is no real climbing on this trip, but the extreme weather conditions and very strong winds can make this crossing a very challenging undertaking. There is a possibility that due to stormy weather the expedition members must remain in tents for several days at a time. Fully approved UIAGM mountain and ski guides are responsible for safety and will lead the group during this multiple day expedition. A medically qualified person will be appointed. The minimum client to guide ratio is 1 guide to 4 clients. Basic equipment is available onboard (sledges, snowshoes, field camp and alpine mountaineering essentials). Ski trekkers only bring their own ski equipment (Randonées or Telemark skis, skiing boots) and personal expedition clothing. In order to be considered for this ski trekking expedition all participants are required to fill in a Personal Information / Medical form. Furthermore participants need to submit a report summarizing their personal ski mountaineering/trekking history preferably in an expedition setting. Applications will be reviewed for interview. A supplement will be charged for the ski crossing package. For prices please refer to Dates & Rates. For more details please refer to the activity manual.

Antarctic Peninsula Sub-Antarctic and mid-Atlantic Islands 2012/2013

Typical itineraries are illustrated below. All itineraries are for guidance only. Programs may vary depending on local ice and weather conditions, the availability of landing sites and opportunities to see wildlife. The final itinerary will be determined by the Expedition Leader on board. Flexibility is paramount for expedition cruises.

South Georgia

PLA20 S T

Oct 17 – Nov 03

17 nights

Montevideo - Ushuaia
aboard Plancius

OTL28

Mar 17 – Apr 03

17 nights

Ushuaia - Montevideo
aboard Ortelius



Special Expedition Option: Ski traverse across South Georgia on voyage PLA20.

Voyage OTL28 offers the same itinerary, but in reverse.

Day 1: Montevideo, Uruguay - In the afternoon, we embark in Montevideo and set sail to South Georgia. OTL28 offers the same voyage as PLA20, but in reverse and starts in Ushuaia / Argentina and ends in Montevideo / Uruguay.

Days 2 – 6: At sea - Across the Southern Atlantic Ocean, in the Westerlies the ship is followed by several species of albatrosses, storm petrels, shearwaters and diving petrels. At sea, on our way to South Georgia we will cross the Antarctic Convergence. Entering Antarctic waters, the temperature will drop by as much as 10 degrees C in the time span of only a few hours. Near the Convergence we will see a multitude of southern seabirds near the ship; several species of Albatrosses, Shearwaters, Petrels, Prions and Skuas. Depending on progress (weather) we might have South Georgia in sight on day 6, which might also allow us to do our first landing.

Days 7 – 13: South Georgia - An exciting expedition with two adventure options: the normal sea voyage for “sea explorers” (with zodiac excursions and hiking options) and a land expedition for “ski explorers”. The sea explorers will explore the coastlines of the Island while at the same time the ski explorers will attempt to traverse the Island on a self supplied ski trek from the South coast (King Haakon Bay) to the North coast (Fortuna Bay) in 4 days.

Ski trek across South Georgia (only during voyage PLA20): A group of up to 12 ski explorers and 2-3 mountain guides will attempt to traverse on an unsupported and self supplied trek across the island with skis hauling pulkas (sledges). The skiers will cover a total distance of 40 km retracing sections of the historic Shackleton route, which he covered in 36 hours.

On arrival day at King Haakon Bay, the expedition members will spend their first night further inland. The expedition will then embark on their trek across alpine passes and glaciers aiming for reunion with the ship at Fortuna or Stromness Bay. After both expeditions have rejoined, all passengers will then continue to enjoy the latter part of the South Georgia cruise itinerary.

Sea voyage: The sea explorers who remain on board will say their goodbyes to the skiers at Pegotty Bluff, the historic camp site. It was from there on the 19th May 1916 that Shackleton, Crean and Worsley set off across the Island to Stromness in a 36 hours marathon trek. The same day, Plancius, will stop over at Cape Rosa, where we intend to make a landing. Shackleton’s *James Caird* landed at Cape Rosa after an epic 16 days voyage from Elephant Island. Truly a historic day!



OCEANWIDE
EXPEDITIONS

Day by Day Itinerary

The ship will be positioned around the Northwest corner of South Georgia. One of the highlights is the visit to Prion Island, where we will witness the breeding efforts of the huge Wandering Albatross and enjoy watching their displays. At Salisbury Plain, the second largest King Penguin colony in South Georgia, we will also see elephant seals.

In Fortuna Bay, the ship will most likely re-unite with the ski explorers. The beaches are inhabited by King Penguins and seals. We might even see reindeer! Both, sea explorers and ski explorers can follow the final section of Shackleton's route to Stromness, the abandoned whaling village.

At Grytviken we will also see an abandoned whaling village, where King Penguins now walk in the streets and seals have taken over the buildings. At Grytviken we'll also offer a visit to the Whaling History Museum as well as to Shackleton's grave near by.

During the next few days the expedition will explore the beaches of Ocean Harbour, Godthul, Cobblers Cover, Gold Harbour, Drygalski Fjord, Larsen Harbour, Cooper Bay, St. Andrews Bay, Possession Bay, Right Whale Bay and Elsehul. The sites that we visit give us a good opportunity to see a wide spectrum of landscapes and wildlife, like King and Macaroni Penguins, Light-mantled Sooty Albatrosses, Fur Seals, Elephant Seals and the introduced reindeer.

Drygalski Fjord is a great scenic place for zodiac cruising. There will be opportunities for walkers in the group to hike at Godthul and Gold Harbour hikes will be guided and vary in length with approx. 2 – 4 hours, 5 – 10 km. All hiking excursions are subject to weather and landing site availability.

The voyage in South Georgia ends at Elsehul and the ship will take course to Ushuaia/Argentina in the evening.

Days 14 – 17: At sea - On our way to Ushuaia we are again followed by a great selection of seabirds while crossing the Southern Atlantic.

Day 18: Ushuaia / Argentina - We arrive in the morning in Ushuaia and disembark. OTL28 offers the same voyage as PLA20, but in reverse and starts in Ushuaia / Argentina and ends in Montevideo / Uruguay.

Falkland Islands - South Georgia - Antarctic Peninsula

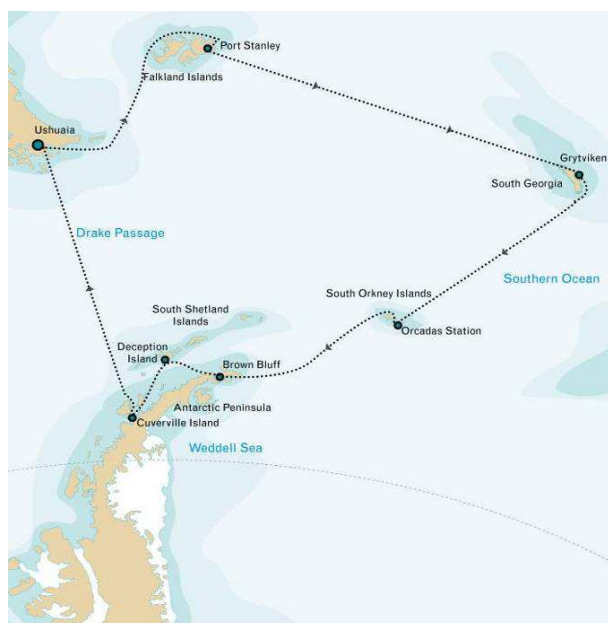
PLA21 S

Nov 03 – Nov 22

19 nights

Ushuaia – Ushuaia
aboard Plancius

A typical itinerary to the Falklands, South Georgia and the Antarctic Peninsula is illustrated below. All itineraries are for guidance only. Programs may vary depending on local ice and weather conditions, the availability of landing sites and opportunities to see wildlife. The final itinerary will be determined by the Expedition Leader on board. Flexibility is paramount for expedition cruises.



Day 1: Ushuaia - In the afternoon, we embark in Ushuaia, Tierra del Fuego, Argentina, the southernmost city in the world located at the Beagle Channel and sail through this scenic waterway for the rest of the evening.

Day 2: At sea - In the Westerlies the ship is followed by several species of albatrosses, storm petrels, shearwaters and diving petrels.

Day 3: Falkland Islands - In the Falkland Islands (Malvinas) we plan to spend the whole day on the fascinating western side of the archipelago. A hike along the Shore of Carcass Island will give us views of Magellanic and Gentoo-Penguins, as well as close encounters with water fowl and Night herons and passerines. In addition, on Saunders we will be able to observe four species of breeding penguins (Gentoo, King, Magellanic and Rockhopper), Black-browed Albatrosses and King Cormorants.



OCEANWIDE
EXPEDITIONS

Day by Day Itinerary

Day 4: Stanley, Falkland Islands - In Stanley, the capital of the Falklands, we can experience Falkland culture, which has some South American characteristics as well as Victorian charm. In Stanley and the surrounding area we can see quite an important number of stranded clippers from a century ago. All passengers are free to wander around on their own. We recommend a visit to the local church and museum (admission fees not included).

Days 5 & 6: At sea - On our way to South Georgia we will cross the Antarctic Convergence. Entering Antarctic waters, the temperature will drop by as much as 10 degrees C in the time span of only a few hours. Near the Convergence we will see a multitude of southern seabirds near the ship; several species of Albatrosses, Shearwaters, Petrels, Prions and Skuas.

Days 7 – 10: South Georgia - In the afternoon of day 7 we arrive at our first landing site in South Georgia. We might visit the bay of Elsehul, with its very active fur seal breeding beach, and then set course to Right Whale Bay, Salisbury Plain, Godthul, St. Andrews Bay, Gold Harbour, Cooper Bay and Drygalski Fjord to give you a good opportunity to see a wide spectrum of landscapes and wildlife, like the introduced Reindeer, Elephant seals, Fur seals, King and Macaroni Penguins. One of the highlights might be our visit to Prion Island, where we will witness the breeding efforts of the huge Wandering Albatross and enjoy watching their displays.

At Fortuna Bay, we might try to follow in the footsteps of the great British Explorer Ernest Shackleton and hike over to Stømness Bay. There and at Grytviken we'll see an abandoned whaling village, where King Penguins now walk in the streets and seals have taken over the buildings. At Grytviken we'll also offer a visit to the Whaling History Museum as well as to Shackleton's grave near by. We will depart from South Georgia in the afternoon of day 10.

Day 11: At sea - Where the ship is again followed by a multitude of seabirds. At some point we might encounter sea-ice, and it is at the ice-edge where we might have a chance to see some high-Antarctic species like the McCormick Skua and Snow Petrel.

Day 12: South Orkney Islands - We are planning on a visit to Orcadas station, an Argentinean base located in the South Orkney Islands. The friendly base personnel will show us their facilities and we can enjoy the wonderful views of the surrounding glaciers.

Day 13: At sea

Days 14 – 17: Antarctic Peninsula - We will sail into the Weddell Sea through the ice-clogged Antarctic Sound. Huge tabular icebergs will announce our arrival to the eastern side of the Antarctic Peninsula. We plan to visit Paulet Island with a million pairs of Adelie Penguins and the remains of the Nordenskjöld expedition. This landing is not always guaranteed due to sea ice conditions. At Brown Bluff we may set foot on the Continent.

We may land at Half Moon Island at the South Shetland Islands, where we can observe Elephant, Weddell and Fur Seals as well as Chinstrap Penguins, Blue-eyed Shags, Wilson's Storm Petrels, Kelp Gulls, Snowy Sheathbills, Antarctic Terns and Antarctic Brown Skuas.

At Deception Island, we will try to land at Baily Head home to a colony of ten thousands Chinstrap Penguins (please note this landing is not always guaranteed and is only possible in good weather conditions). Good walkers may hike from Baily Head over the ridge of the crater into Whalers Bay, while our ship braves its entrance into the crater through the spectacular Neptune's Bellow into the ring of Deception Island.

Deception itself is a sub-ducted crater, which opens into the sea, creating a natural harbour for the ship. Here we find hot springs, an abandoned whaling station, thousands of Cape Pigeons and many Dominican Gulls, Brown and South Polar Skuas and Antarctic Terns. Wilson's Storm Petrels and Black-bellied Storm Petrels nest in the ruins of the whaling station in Whalers Bay. On our way south, we sail to Cuverville Island in the Errera Channel, a small precipitous island, nestled between the mountains of the Antarctic Peninsula. It contains a large colony of Gentoo Penguins and breeding pairs of Brown Skuas. We also hope for a continental landing at Neko Harbour in Andvord Bay. We are aiming to sail further south to Paradise Bay with its myriad icebergs and deep cut fjords, while having chances of seeing large Whales. We will have opportunities for zodiac cruising between the icebergs in the inner parts of the fjords. We may land at the Argentinian station Almirante Brown, which is most of the time not manned. Sailing through the Neumayer Channel we aim for the historic British station Port Lockroy on Goudier Island. We also hope for a landing on the neighbouring island Jougla Point



OCEANWIDE EXPEDITIONS

Day by Day Itinerary

which is inhabited by Gentoo Penguins and Imperial Shags. Sailing north again through Neumayer Channel and Gerlache Strait, we arrive at the Melchior Islands with a very beautiful landscape with icebergs, where we may encounter Leopard Seals, Crabeater Seals and whales. We leave from here to the open sea with direction Ushuaia.

Days 18 – 19: At sea - On our way north we are again followed by a great selection of seabirds while crossing the Drake Passage.

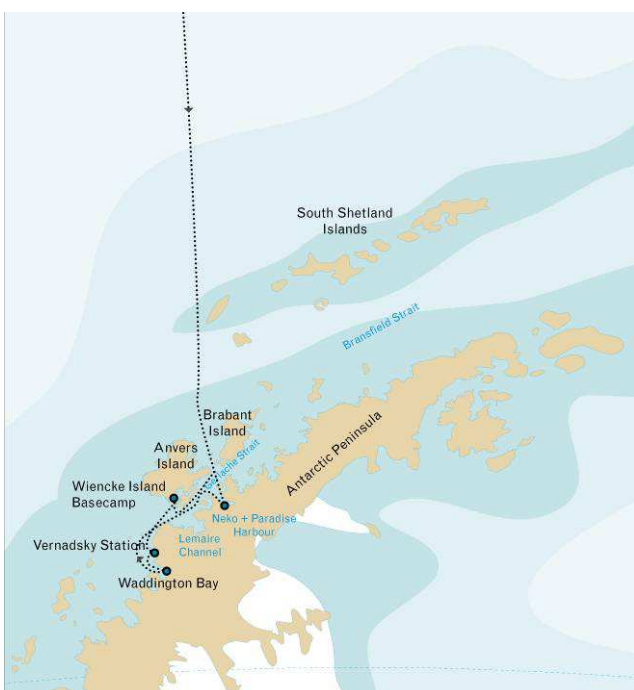
Day 20: Ushuaia - We arrive in the morning in Ushuaia and disembark.

Antarctic Peninsula, Basecamp Plancius

PLA22	CKMPS	Nov 22 – Dec 03	11 nights
PLA30	CDHKMP	Feb 26 – Mar 09	11 nights

Ushuaia - Ushuaia
aboard Plancius
aboard Plancius

A Basecamp itinerary to the Antarctic Peninsula is illustrated below. All itineraries are for guidance only. Programs may vary depending on local ice and weather conditions, the availability of landing sites and opportunities to see wildlife. The final itinerary will be determined by the Expedition Leader on board. Flexibility is paramount for expedition cruises.



Day 1: Ushuaia - In the afternoon, we embark in Ushuaia, Tierra del Fuego, Argentina, the southernmost city in the world located at the Beagle Channel and sail through this scenic waterway for the rest of the evening.

Days 2 & 3: At sea - During these two days we sail across the Drake Passage. When we cross the Antarctic Convergence, we arrive in the circum-Antarctic upwelling zone. In this area we may see Wandering Albatrosses, Grey Headed Albatrosses, Black-browed Albatrosses, Light-mantled Sooty Albatrosses, Cape Pigeons, Southern Fulmars, Wilson’s Storm Petrels, Blue Petrels and Antarctic Petrels. Near the South Shetland Islands, we spot our first icebergs.

Days 4 – 9: Antarctica - We will sail directly to “High Antarctica”, passing the Melchior islands and the Schollaert Channel between Brabant and Anvers Island. We will sail to the Neumayer Channel, where we position our ship for the multi activity base camp. The protected waters around Wiencke Island will become our playground for all activities. In this alpine

environment there are great opportunities to scout the region on foot, per zodiac and during kayak trips. Walkers will find opportunities to use snowshoes on hikes near the shore lines and the mountaineers will find their challenge by climbing hills and view points further inland, i.e. Jabet Peak (540 m). All climbs and excursions can only be conducted in good weather conditions.

We plan to stay two overnights at anchor in order to implement two camp nights and two full activity days. We will visit the British research station and the post office Port Lockroy on Goudier Island. Close to Port Lockroy we may also offer a landing on Jougla Point with Gentoo Penguins and Imperial Shags. We sail through the spectacular Lemaire Channel to Booth Island, Pleneau and Petermann Island where we can find Adelie Penguins and Blue-eyed Shags. In this area there are good chances to encounter Humpback Whales, Minke Whales and Fin Whales.

Our second Basecamp night will be erected near the Continent; we choose a camp site which is suitable and close to next day’s activity. The mountaineers hope to reach the summit of Mt. Demaria (640 m) at Waddington Bay. A visit to one of the scientific stations in Antarctica will give you an insight about the life of modern Antarcticans working on the White Continent. Further south we may have time to visit the Ukrainian Vernadsky Station, where we will receive a warm welcome from the station crew.

In the afternoon at Neko Harbour we will have the opportunity to set foot on the Antarctic Continent in a magnificent landscape of a huge glacier and enjoy the landscape during zodiac cruises, hikes and kayak excursions. A small group of



Day by Day Itinerary

mountaineers may climb up on higher grounds of the glacier. We will spend the night at Neko or near Paradise Bay with a camp erected ashore. We will leave Neko Harbour in the early morning after breaking our last camp. We sail via Melchior Islands towards the open sea of the Drake Passage. We have again a chance of seeing many seabirds.

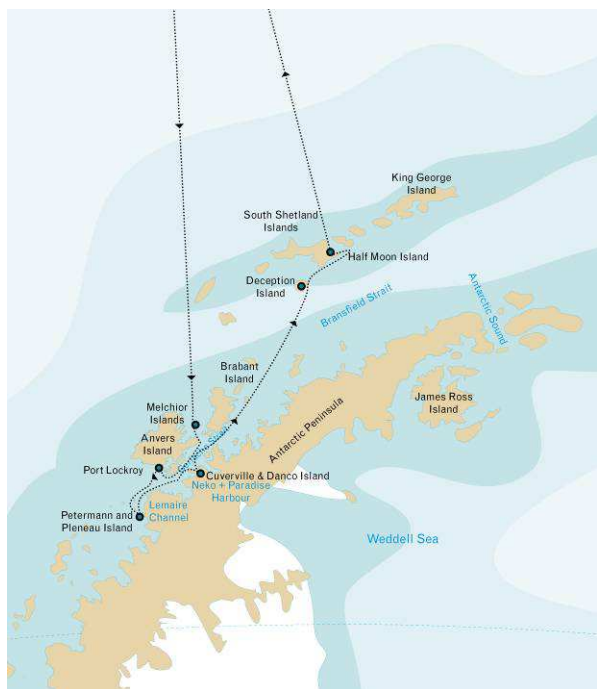
Days 10 – 11: At sea - On our way north, we are again followed by a great selection of seabirds while crossing the Drake Passage.

Day 12: Ushuaia - We arrive in the morning in Ushuaia and disembark.

Antarctic Peninsula with South Shetlands

PLA23	C K P S	Dec 03 – Dec 13	10 nights	Ushuaia - Ushuaia aboard Plancius
PLA24	C K S	Dec 13 – Dec 22	09 nights	aboard Plancius
PLA25	C K S	Dec 22 – Jan 02	11 nights	aboard Plancius

A typical itinerary to the Antarctic Peninsula with South Shetland Islands is illustrated below. All itineraries are for guidance only. Programs may vary depending on local ice and weather conditions, the availability of landing sites and opportunities to see wildlife. The final itinerary will be determined by the Expedition Leader on board. Flexibility is paramount for expedition cruises.



Day 1: Ushuaia - In the afternoon, we embark in Ushuaia, Tierra del Fuego, Argentina, the southernmost city in the world located at the Beagle Channel and sail through this scenic waterway for the rest of the evening.

Days 2 & 3: at sea - During these two days we sail across the Drake Passage. When we cross the Antarctic Convergence, we arrive in the circum-Antarctic upwelling zone. In this area we may see Wandering Albatrosses, Grey Headed Albatrosses, Black-browed Albatrosses, Light-mantled Sooty Albatrosses, Cape Pigeons, Southern Fulmars, Wilson’s Storm Petrels, Blue Petrels and Antarctic Petrels. Near the South Shetland Islands, we spot our first icebergs.

Days 4 – 8: Antarctica (PLA24: days 4 – 7 excluding Vernadsky Station & PLA25: days 4-9 with an extra day in Antarctica):

We will sail directly to “High Antarctica”, passing the Melchior islands and the Schollaert Channel between Brabant and Anvers Island. On Cuverville Island, a small precipitous island, nestled between the mountains of the Antarctic Peninsula and Danco

Island, we will find a large colony of Gentoo Penguins and breeding pairs of Brown Skuas. If we land on Danco Island we can observe Chinstrap Penguins and possibly Weddell and Crabeater Seals. In Neko Harbour we will have the opportunity to set foot on the Antarctic Continent in a magnificent landscape of huge glaciers calving at sea level. We enjoy the landscape surrounded by alpine peaks during zodiac cruises. In Paradise Bay again with its myriad icebergs and deep cut fjords, we have the opportunity to set foot on the Antarctic Continent again. We shall have the opportunity for zodiac cruising between the icebergs in the inner parts of the fjords. In this area we have good chances to see Humpback Whales and Minke Whales.

We sail through the spectacular Lemaire Channel to Pleneau and Petermann Island where we can find Adelie Penguins and Blue-eyed Shags. In this area there are good chances to encounter Humpback Whales, Minke Whales and Fin Whales. A visit to one of the scientific stations in Antarctica will give you an insight about the life of modern Antarcticans working on the White Continent. Further south we may visit the Ukrainian Vernadsky Station, where we will receive a warm welcome from the station crew. Sailing north through Neumayer Channel, we hope to get permission to visit the British research station and post office Port Lockroy on Goudier Island. Close to Port Lockroy we may also offer a landing on Jugla Point with Gentoo Penguins and Imperial Shags.



OCEANWIDE EXPEDITIONS

Day by Day Itinerary

On our way North through the Gerlache Strait we finally arrive at the South Shetland Islands. We will sail to Deception Island. Our ship braves its entrance into the crater through the spectacular Neptune's Bellow into the ring of Deception Island. We hope for a good long walk and kayak trip which will depend on site availability and weather conditions.

Deception is a sub-ducted crater, which opens into the sea, creating a natural harbor for the ship. Here we find hot springs, an abandoned whaling station, thousands of Cape Pigeons and many Dominican Gulls, Brown and South Polar Skuas and Antarctic Terns. Wilson's Storm Petrels and Black-bellied Storm Petrels nest in the ruins of the whaling station in Whalers Bay.

We leave from here and sail to Half Moon Island, where we will find a variety of Chinstrap Penguins. Seals often haul out on the beach. These volcanic islands of the South Shetlands are windswept and often shrouded in mist and fog, but do offer subtle pleasures. There is a nice variety of flora (mosses, lichens and flowering grasses) and fauna, such as Gentoo Penguins, Chinstrap Penguins and Southern Giant Petrels.

Our voyage continues through a narrow Strait to the open sea with direction Ushuaia.

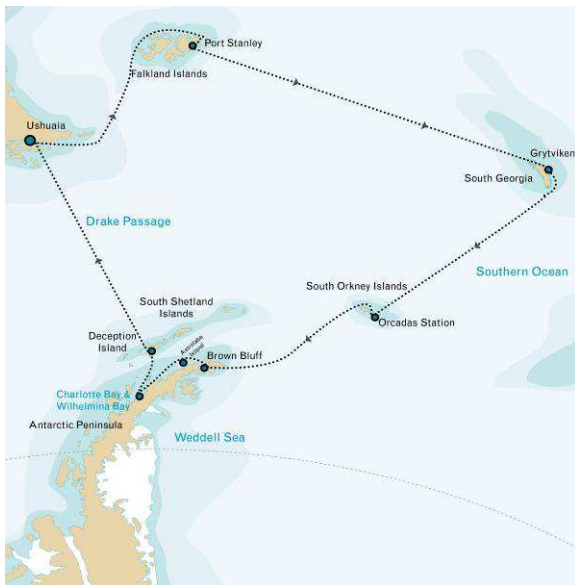
Days 9 – 10(PLA24: days 8 – 9 & PLA25: days 10-11): at sea - On our way north we are again followed by a great selection of seabirds while crossing the Drake Passage.

Day 11(PLA24: day 10 & PLA25: day 12): Ushuaia - We arrive in the morning in Ushuaia and disembark.

Falkland Islands - South Georgia - Antarctic Peninsula

PLA26	Jan 02 – Jan 20	18 nights	Ushuaia – Ushuaia aboard Plancius
PLA27	Jan 20 – Feb 07	18 nights	aboard Plancius

A typical itinerary to the Falklands, South Georgia and the Antarctic Peninsula is illustrated below. All itineraries are for guidance only. Programs may vary depending on local ice and weather conditions, the availability of landing sites and opportunities to see wildlife. The final itinerary will be determined by the Expedition Leader on board. Flexibility is paramount for expedition cruises.



Day 1: Ushuaia - In the afternoon, we embark in Ushuaia, Tierra del Fuego, Argentina, the southernmost city in the world located at the Beagle Channel and sail through this scenic waterway for the rest of the evening.

Day 2: at sea - At sea, in the Westerlies the ship is followed by several species of albatrosses, storm petrels, shearwaters and diving petrels.

Day 3: Falkland Islands - In the Falkland Islands (Malvinas) we plan to spend the whole day on the fascinating western side of the archipelago. A hike along the Shore of Carcass Island will give us views of Magellanic and Gentoo-Penguins, as well as close encounters with water fowl and Night herons and passerines. In addition, on Saunders we will be able to observe four species of breeding penguins (Gentoo, King, Magellanic and Rockhopper), Black-browed Albatrosses and King Cormorants.

Day 4: Stanley, Falkland Islands - In Stanley, the capital of the Falklands, we can experience Falkland culture, which has some South American characteristics as well as Victorian charm. In Stanley and the surrounding area we can see quite an important number of stranded clippers from a century ago. All passengers are free to wander around on their own. We recommend a visit to the local church and museum (admission fees not included).

Days 5 & 6: At sea - On our way to South Georgia we will cross the Antarctic Convergence. Entering Antarctic waters, the temperature will drop by as much as 10 degrees C in the time span of only a few hours. Near the Convergence we will see a multitude of southern seabirds near the ship; several species of Albatrosses, Shearwaters, Petrels, Prions and Skuas.



OCEANWIDE
EXPEDITIONS

Day by Day Itinerary

Days 7 – 10: South Georgia - In the afternoon of day 7 we arrive at our first landing site in South Georgia. We might visit the bay of Elsehul, with its very active fur seal breeding beach, and then set course to Right Whale Bay, Salisbury Plain, Godthul, St. Andrews Bay, Gold Harbour, Cooper Bay and Drygalski Fjord to give you a good opportunity to see a wide spectrum of landscapes and wildlife, like the introduced Reindeer, Elephant seals, Fur seals, King and Macaroni Penguins.

One of the highlights might be our visit to Prion Island, where we will witness the breeding efforts of the huge Wandering Albatross and enjoy watching their displays. At Fortuna Bay we might try to follow in the footsteps of the great British Explorer Ernest Shackleton and hike over to Stømness Bay. There and at Grytviken we'll see an abandoned whaling village, where King Penguins now walk in the streets and seals have taken over the buildings. At Grytviken we'll also offer a visit to the Whaling History Museum as well as to Shackleton's grave near by. We will depart from South Georgia in the afternoon of day 10.

Day 11: At sea - Where the ship is again followed by a multitude of seabirds. At some point we might encounter sea-ice, and it is at the ice-edge where we might have a chance to see some high-Antarctic species like the McCormick Skua and Snow Petrel.

Day 12: South Orkney Islands - We are planning on a visit to Orcadas station, an Argentinean base located in the South Orkney Islands. The friendly base personnel will show us their facilities and we can enjoy the wonderful views of the surrounding glaciers.

Day 13: At sea

Days 14 – 16: Antarctic Peninsula - We will sail into the Weddell Sea through the ice-clogged Antarctic Sound. Huge tabular icebergs will announce our arrival to the eastern side of the Antarctic Peninsula. We plan to visit Brown Bluff where we may set foot on the Continent. In good sailing conditions we may decide to extend our time in the Weddell Sea.

Charlotte Bay on the west coast of Graham Land was discovered by Adrien de Gerlache during the 1897–99 Belgica expedition and named after the fiancée of Georges Lecointe, Gerlache's executive officer, hydrographer and second-in-command of the expedition. The topography of the surrounding area is mountainous, with nunataks rising through the ice. Charlotte Bay is often filled with icebergs. Mostly we see seals on floes in Charlotte Bay, and occasional, kelp gulls, skuas, shags, or penguins. In Wilhelmina Bay we will admire the rugged ice coated mountains of the Arctowski Pensinsula.

At Deception Island our ship braves into the entrance of the crater through the spectacular Neptune's Bellow into the ring of Deception Island. Deception itself is a sub-ducted crater, which opens into the sea, creating a natural harbour for the ship. Here we find hot springs, an abandoned whaling station, thousands of Cape Pigeons and many Dominican Gulls, Brown and South Polar Skuas and Antarctic Terns. Wilson's Storm Petrels and Black-bellied Storm Petrels nest in the ruins of the whaling station in Whalers Bay. We leave from here and sail through the Shetland Islands (Half Moon) to the open sea with direction Ushuaia.

Days 17 – 18: At sea - On our way north we are again followed by a great selection of seabirds while crossing the Drake Passage.

Day 19: Ushuaia - We arrive in the morning in Ushuaia and disembark.

Antarctic Peninsula - South Georgia

OTL22

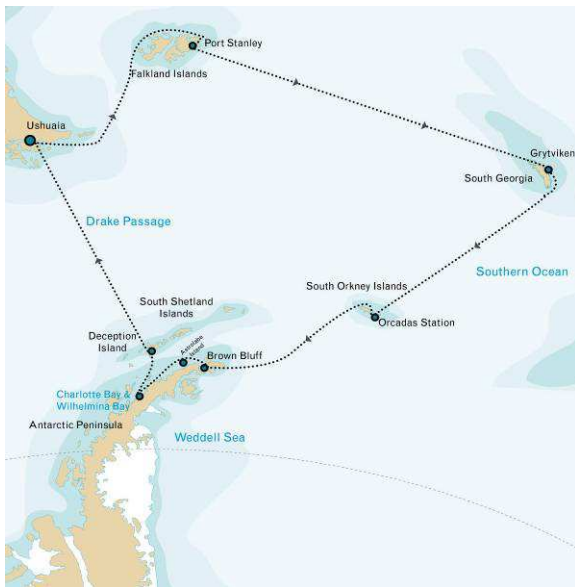
Nov 23 – Dec 08

15 nights

Ushuaia - Port Stanley
aboard Ortelius

A typical itinerary South Georgia and the Antarctic Peninsula is illustrated below. All itineraries are for guidance only. Programs may vary depending on local ice and weather conditions, the availability of landing sites and opportunities to see wildlife. The final itinerary will be determined by the Expedition Leader on board. Flexibility is paramount for expedition cruises.

Please note: the one way flight from Port Stanley, Falkland Islands to Santiago de Chile is included in the ship's passage price.



Day 1: Ushuaia - In the afternoon, we embark in Ushuaia, Tierra del Fuego, Argentina, the southernmost city in the world located at the Beagle Channel and sail through this scenic waterway for the rest of the evening.

Day 2 and 3: at sea.

Day 4 - 6: Antarctic Peninsula - At Deception Island, we will try to land at Baily Head home to a colony of ten thousands Chinstrap Penguins (please note this landing is not always guaranteed and is only possible in good weather conditions). Good walkers may hike from Baily Head over the ridge of the crater into Whalers Bay, while our ship braves its entrance into the crater through the spectacular Neptune's Bellow into the ring of Deception Island.

Deception itself is a sub-ducted crater, which opens into the sea, creating a natural harbour for the ship. Here we find hot springs, an abandoned whaling station, thousands of Cape Pigeons and many

Dominican Gulls, Brown and South Polar Skuas and Antarctic Terns. Wilson's Storm Petrels and Black-bellied Storm Petrels nest in the ruins of the whaling station in Whalers Bay.

At Portal Point there used to be a Falkland Islands Dependency Survey (British Antarctic Survey from 1962) hut which was built there between Brabant Island and the Danco Coast in 1956. The hut has been removed to the Falkland Islands Museum in Stanley.

Portal Point served as the gateway for a route to the polar plateau. Immediately behind the low point on which the hut was located the (usually snow-covered) land rises steeply upslope toward the plateau. The topography of the surrounding area is mountainous, with nunataks rising through the ice. Charlotte Bay is often filled with icebergs. Mostly we see seals on floes in Charlotte Bay, and occasional, kelp gulls, skuas, shags, or penguins. From the slope above Portal Point, and at its highest point, there are excellent views of Charlotte Bay. In Wilhelmina Bay we will admire the rugged ice coated mountains of the Arctowski Peninsula.

Charlotte Bay on the west coast of Graham Land was discovered by Adrien de Gerlache during the 1897–99 Belgica expedition and named after the fiancée of Georges Leconte, Gerlache's executive officer, hydrographer and second-in-command of the expedition.

We will sail into the Weddell Sea through the ice-clogged Antarctic Sound. Huge tabular icebergs will announce our arrival to the eastern side of the Antarctic Peninsula. We plan to visit Brown Bluff where we may set foot on the Continent.

Day 7 – 9: at sea to South Georgia. On our way to South Georgia we are planning on a visit to Orcadas station, an Argentinean base located in the South Orkney Islands. The friendly base personnel will show us their facilities and we can enjoy the wonderful views of the surrounding glaciers.

Days 10 – 12: South Georgia - At Fortuna Bay we might try to follow in the footsteps of the great British Explorer Ernest Shackleton and hike over to Stømness Bay. There and at Grytviken we'll see an abandoned whaling village, where King Penguins now walk in the streets and seals have taken over the buildings. At Grytviken we'll also offer a visit to the Whaling History Museum as well as to Shackleton's grave near by. In the afternoon of day 4 we arrive at our first landing site in South Georgia. One of the highlights might be our visit to Prion Island, where we will witness the breeding efforts of the huge Wandering Albatross and enjoy watching their displays. We set course to Right Whale Bay, Salisbury Plain, Godthul, St. Andrews Bay, Gold Harbour, Cooper Bay and Drygalski Fjord to give you a good opportunity to see a wide spectrum of landscapes and wildlife, like the introduced Reindeer, Elephant seals, Fur seals, King and Macaroni Penguins.

Day 13 - 15: At sea to Port Stanley, Falkland Islands

Day 16: : Arrival in Port Stanley and flight to Santiago de Chile (included in the ship's passage price.

South Georgia and the South Sandwich Islands

OTL 23

Dec 08 – Dec 22

14 nights

Port Stanley – Port Stanley
aboard Ortelius

Please note: the return flight with LAN Chile Santiago de Chile – Port Stanley, Falkland islands is included in the ship's passage price.

During this voyage we combine South Georgia (famous for its King Penguins and breeding grounds of the Wandering Albatrosses) with the rarely visited and uninhabited South Sandwich Islands, home to the world's largest Chinstrap Penguin colony (over a million breeding pairs!).

Day 1: Flight from Santiago de Chile to the Falkland Islands. Departure to South Georgia

Flight from Santiago de Chile to Mount Pleasant on the Falkland Islands. In Stanley, the capital of the Falklands, we can experience Falkland culture, which has some South- American characteristics as well as Victorian charm.

In Stanley and the surrounding area we can see quite an important number of stranded clippers from a century ago.

In the afternoon, we embark in Port Stanley and in the evening we set sail to South Georgia.

Days 2 – 3: At sea - At sea, across the Southern Atlantic Ocean, in the Westerlies the ship is followed by several species of albatrosses, storm petrels, shearwaters and diving petrels. At sea, on our way to South Georgia we will cross the Antarctic Convergence. Entering Antarctic waters, the temperature will drop by as much as 10 degrees C in the time span of only a few hours. Near the Convergence we will see a multitude of southern seabirds near the ship; several species of Albatrosses, Shearwaters, Petrels, Prions and Skuas.

Days 4 – 7: In South Georgia we shall visit the bay of Elsehul, with it's very active fur seal breeding beach, and then take course to Right Whale Bay, Salisbury Plain, Gold Harbour and Cooper Bay to give you a good opportunity to see a wide spectrum of landscapes and wildlife, like the introduced Reindeer, Elephant seals, King and Macaroni Penguins. At Fortuna Bay we might try to follow in the footsteps of the great British Explorer Ernest Shackleton and hike over to Stømness Bay. There and at Grytviken we'll see and abandoned whaling village, where King Penguins now walk in the streets and seals have taken over the buildings. At Grytviken we'll also offer a visit to the Whaling History Museum as well as to Shackleton's grave near by. One of the highlights might be our visit to Prion Island, where we will witness the breeding efforts of the huge Wandering Albatross and enjoy watching their displays.

Day 8:

At sea to the rarely visited South Sandwich Islands.

Day 9 – 10: At the rarely visited and uninhabited South Sandwich Islands (British Territory), where we will try to land on Zavodovski Island, home to over a million pairs of breeding Chinstrap Penguins, making it one of the world's largest penguin colonies. Other landings will be pursued on the steep-sided Candlemas Island, Saunders Island, Montague Island and/or Southern Thule, depending on weather and landing conditions. These volcanic islands, discovered by James Cook in 1775, with an ice cap on the top, are windswept and often shrouded in mist and fog, but do offer subtle pleasures. There is a nice variety of flora (mosses, lichens and flowering grasses) and fauna, such as Gentoo and Chinstrap Penguins and Southern Giant Petrels. Elephant Seals and Fur Seals also haul out at the beaches.

Days 11 – 14: At sea - On our way to Port Stanley we are again followed by a great selection of seabirds while crossing the Southern Atlantic.

Day 15: Port Stanley / Falkland Islands. Disembarkation and transfer to the international airport Mount Pleasant and flight to Santiago de Chile (included in the ship's passage price).

King Penguins of the Falkland Islands – Elephant Island and Antarctic Peninsula

OTL 20	Nov 03 – Nov 13	10 nights	Port Stanley – Ushuaia aboard Ortelius
OTL 24	Dec 22 – Jan 01	10 nights	aboard Ortelius

A typical itinerary is illustrated below. All itineraries are for guidance only. Programs may vary depending on local ice and weather conditions, the availability of landing sites and opportunities to see wildlife. The final itinerary will be determined by the Expedition Leader on board. Flexibility is paramount for expedition cruises.

Please note: a one way flight with LAN Chile from Santiago de Chile to Port Stanley, Falkland islands is included in the ship's passage price.

Day 1: Flight from Santiago de Chile to the Falkland Islands. In the late afternoon we set sail to Volunteer Point, where an evening landing is scheduled. Volunteer Point offers Magellanic Penguins, ca. 850 breeding pairs of Gentoo Penguins and 500 breeding pairs of King Penguins.

Day 2: Sea Lion Island in the south is famous for its large breeding site of Elephant Seals and during our hike to the west we may observe sea lions and at Rockhopper Point ca. 470 pairs of Rockhopper Penguins. Other birds are King Cormorants, Southern Giant Petrels, Gentoo and Magellanic Penguins. Killer whales are regularly spotted close to shore.

Day 3 – 4: At sea. We will observe several species of albatrosses, storm petrels, shearwaters and diving petrels.

Day 5: We schedule two landings on Elephant Island. The Island will always be connected with the British explorer Sir Ernest Shackleton. After the loss of his ship *Endurance* in the Weddell Sea, he and his crew finally reached Elephant Island on drifting ice floes. They established a camp on Elephant Island (Wild Point), but decided to set sail with an open life boat to South Georgia from where they could travel back to England. At Wild Point we will try our first landing, where we can visit the monument for Shackleton and his men. In the south at Cape Lookout we will make a second attempt. On Elephant Island we can observe Gentoo, Macaroni and Chinstrap Penguins, Wilson's storm-Petrels and Fur Seals.

Day 6: Hope Bay, at the northeast tip of the Antarctic Peninsula in the Antarctic Sound, was discovered by the Swedish Antarctic expedition of Nordenskjöld in 1902. Three expedition members spent the winter there (hope) and it was therefore named Hope Bay. The remains of their hut can be found close to the vessel's landing site. On Hope bay we can observe Adélie Penguins and Snowy Sheatbills are also commonly present.



OCEANWIDE
EXPEDITIONS

Day by Day Itinerary

Day 7: we will visit Astrolabe Island which was discovered by the French Expedition of Jules Dumont d'Urville (1837-40) and named after his expedition ship *Astrolabe*. Alternatively we visit Half Moon Island. The latter is situated on the east side of Livingstone Island and was known by sealers as early as 1821. Confirmed nesting sites include Chinstrap Penguins, Blue-eyed Shags, Wilson's storm-Petrels, Kelp Gulls, Snowy Shearwaters, Antarctic Terns and Antarctic Brown Skuas. Southern Elephant Seals as well as Antarctic Fur Seals regularly haul-out on the beaches.

Day 8: At Deception Island, we will try to land at Baily Head home to a colony of ten thousands Chinstrap Penguins (please note this landing is not always guaranteed and is only possible in good weather conditions). Good walkers may hike from Baily Head over the ridge of the crater into Whalers Bay, while our ship braves its entrance into the crater through the spectacular Neptune's Bellow into the ring of Deception Island.

Deception itself is a sub-ducted crater, which opens into the sea, creating a natural harbour for the ship. Here we find hot springs, an abandoned whaling station, thousands of Cape Pigeons and many Dominican Gulls, Brown and South Polar Skuas and Antarctic Terns. Wilson's Storm Petrels and Black-bellied Storm Petrels nest in the ruins of the whaling station in Whalers Bay.

Day 9 – 10: At sea - On our way north we are again followed by a great selection of seabirds while crossing the Drake Passage.

Day 11: Ushuaia - We arrive in the morning in Ushuaia and disembark.



OCEANWIDE
EXPEDITIONS

Day by Day Itinerary

In search of the Emperor Penguin, Antarctic Peninsula

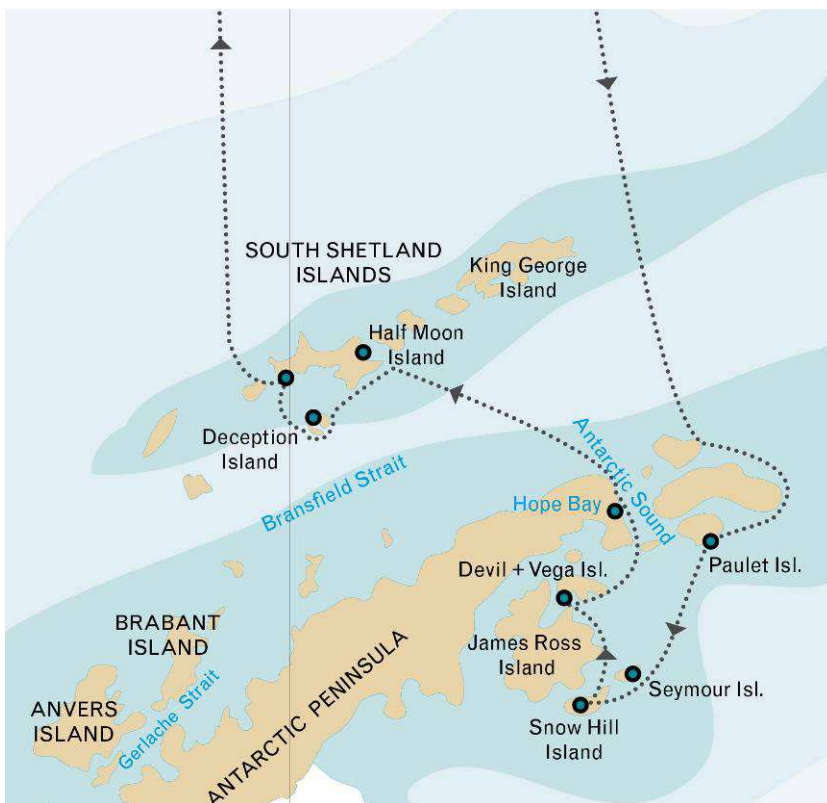
OTL 21

Nov 13 – Nov 23

10 nights

Ushuaia – Ushuaia
aboard Ortelius

An Emperor Penguin rookery, is situated south of Snow Hill Island. Although we will not be able to reach that far through the ice, we will try to sail between Snow Hill Island and James Ross Island close to the ice-edge and observe the young Emperor Penguins on their way to the open water. If the weather and/or ice-conditions are adverse, we will try again the next day. If on the other hand the weather is great, but we can not find any Emperor Penguins, our program would still unfold on Snow Hill Island with a visit to the historic hut of the Swedish Nordenskjöld Expedition and a visit to Seymour Island in order to see fossils.



Day 1

In the afternoon, we embark in Ushuaia, Tierra del Fuego, Argentina, the southernmost city in the world located at the Beagle Channel and sail through this scenic waterway for the rest of the evening.

Day 2 & 3

During these two days we will sail across the Drake Passage. When we cross the Antarctic Convergence, we arrive in the circum-Antarctic upwelling zone. In this area we may meet Wandering Albatrosses, Grey Headed Albatrosses, Black-browed Albatrosses, Light-mantled Sooty Albatrosses, Cape Pigeons, Southern Fulmars, Wilson's Storm Petrels, Blue Petrels and Antarctic Petrels.

Day 4

A typical itinerary in the Weddell Sea could be as follows. This is a sample only, the final itinerary will be determined by the Expedition Leader on board.

We will sail into the Weddell Sea and if the Antarctic Sound is accessible and the ice does not prevent us to sail further, we might see the huge tabular icebergs that announce our arrival to the eastern side of the Antarctic Peninsula. We plan to visit Paulet Island with a million pairs of Adelie Penguins. In the afternoon we visit Snow Hill with the remains of the Nordenskiöld expedition.

Day 5

Between Snow Hill Island and James Ross Island we will make our first attempt to observe Emperor Penguins on the ice-edge making their way to open water. In case this should fail we will try again on day 6. We might also visit Seymour Island, where many fossils can be found, and the Argentinean station Esperanza on the Antarctic Continent (if this is not possible due to weather conditions, we will try again on day 7), where we can observe Adelie Penguins, Cape Petrels, Pale-faced Sheathbills, Skuas, Kelp Gulls and Antarctic Terns.

Day 6

If the ice allows us to go further into the Weddell Sea area we will visit Devil Island and Vega Island with a large colony of Adelie Penguins and a magnificent view for those hikers who can make it to the top of the hill. Melting ice sometimes provides spectacular waterfall from the cliffs close to point 'Well-Met'.



OCEANWIDE
EXPEDITIONS

Day by Day Itinerary

Day 7

On our way north through the Antarctic Sound we might pay a visit to the Argentinean station Esperanza on the Antarctic Continent. We will still look out for Emperor penguins on the ice-floes. In the afternoon we may visit Gourdin Island, with three penguin species; Chinstraps, Gentoo and Adelies.

Day 8

In the morning we have planned to visit Half Moon Island where we can see Chinstrap and Gentoo Penguins, various other bird-species and Southern Elephant Seals and Weddell seals.

Early in the afternoon we will sail to Deception where we have the last landing of our voyage at Pendulum cove.

Day 9 & 10

In the Drake Passage we have again a chance of seeing many seabirds and to take advantage of the knowledge of our lecture team.

Day 11

We arrive in the morning in Ushuaia and disembark.



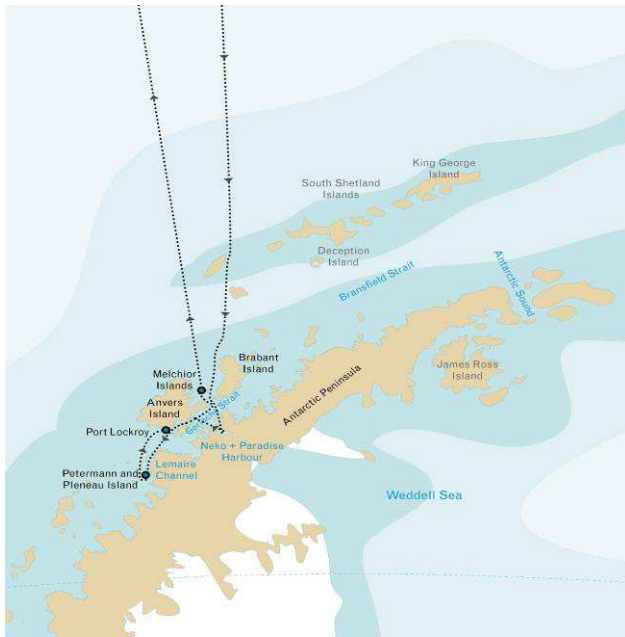
OCEANWIDE
EXPEDITIONS

Day by Day Itinerary

Antarctic Peninsula

PLA28	C K	Feb 07 – Feb 17	10 nights	Ushuaia – Ushuaia aboard Plancius
PLA29	C K	Feb 17 – Feb 26	09 nights	aboard Plancius
PLA32	D K P	Mar 20 – Mar 29	09 nights	aboard Plancius

A typical itinerary to the Antarctic Peninsula is illustrated below. All itineraries are for guidance only. Programs may vary depending on local ice and weather conditions, the availability of landing sites and opportunities to see wildlife. The final itinerary will be determined by the Expedition Leader on board. Flexibility is paramount for expedition cruises.



Day 1: Ushuaia - In the afternoon, we embark in Ushuaia, Tierra del Fuego, Argentina, the southernmost city in the world located at the Beagle Channel and sail through this scenic waterway for the rest of the evening.

Days 2 & 3: At sea - During these two days we sail across the Drake Passage. When we cross the Antarctic Convergence, we arrive in the circum-Antarctic upwelling zone. In this area we may see Wandering Albatrosses, Grey Headed Albatrosses, Black-browed Albatrosses, Light-mantled Sooty Albatrosses, Cape Pigeons, Southern Fulmars, Wilson's Storm Petrels, Blue Petrels and Antarctic Petrels. Near the South Shetland Islands, we spot our first icebergs.

Days 4 - 8 (PLA29 and PLA32: days 4 – 7): Antarctica - We will sail directly to "High Antarctica", passing the Melchior islands and the Schollaert Channel between Brabant and Anvers Island. On Cuverville Island, a small precipitous island, nestled between the mountains of the Antarctic Peninsula and Danco Island, we will

find a large colony of Gentoo Penguins and breeding pairs of Brown Skuas. If we land on Danco Island we can observe Chinstrap Penguins and possibly Weddell and Crabeater Seals. In Neko Harbour we will have the opportunity to set foot on the Antarctic Continent in a magnificent landscape of huge glacier and enjoy the landscape during zodiac cruises. When sailing to Paradise Bay, with its myriad icebergs and deep cut fjords, we will have the opportunity for zodiac cruising between the icebergs in the inner parts of the fjords. In this area we have good chances to see Humpback Whales and Minke Whales. After sailing through the Neumayer Channel, we hope to get permission to visit the British research station and post office Port Lockroy on Goudier Island. Close to Port Lockroy we may also offer a landing on Jougla Point with Gentoo Penguins and Imperial Shags.

We sail through the spectacular Lemaire Channel to Pleneau and Petermann Island where we can find Adelie Penguins and Blue-eyed Shags. In this area, there are good chances to encounter Humpback Whales, Minke Whales and Fin Whales. A visit to one of the scientific stations in Antarctica will give you an insight about the life of modern Antarcticans working on the White Continent. Further south we may visit the Ukrainian Vernadsky Station, where we will receive a warm welcome from the station crew. Sailing north through Neumayer Channel we arrive at the Melchior Islands with a very beautiful landscape with icebergs, where we may encounter Leopard Seals, Crabeater Seals and whales.

Days 9 - 10 (PLA29 and PLA32: days 8 – 9): At sea - On our way north we are again followed by a great selection of seabirds while crossing the Drake Passage.

Day 11 (PLA29 and PLA32: day 10): Ushuaia - We arrive in the morning in Ushuaia and disembark.



OCEANWIDE
EXPEDITIONS

Day by Day Itinerary

Polar Circle & Antarctic Peninsula

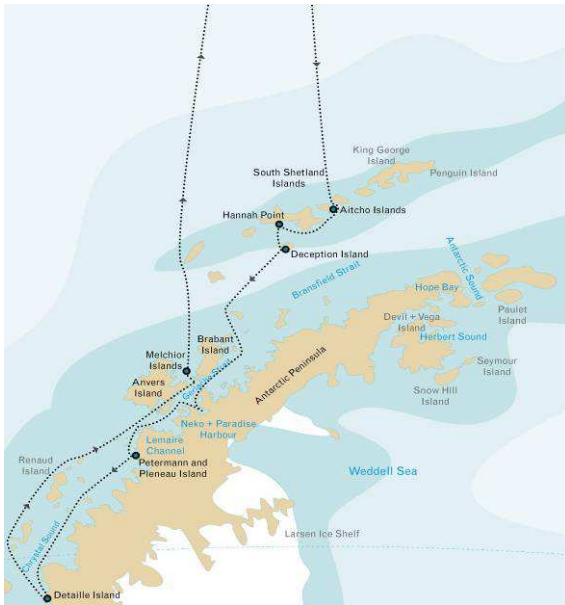
PLA31 C D K P

Mar 09 – Mar 20

11 nights

Ushuaia – Ushuaia
aboard Plancius

A typical itinerary to the Antarctic Peninsula is illustrated below. All itineraries are for guidance only. Programs may vary depending on local ice and weather conditions, the availability of landing sites and opportunities to see wildlife. The final itinerary will be determined by the Expedition Leader on board. Flexibility is paramount for expedition cruises.



Day 1: Ushuaia - In the afternoon, we embark in Ushuaia, Tierra del Fuego, Argentina, the southernmost city in the world located at the Beagle Channel and sail through this scenic waterway for the rest of the evening.

Days 2 & 3: At sea - During these two days we sail across the Drake Passage. When we cross the Antarctic Convergence, we arrive in the circum-Antarctic upwelling zone. In this area we may see Wandering Albatrosses, Grey Headed Albatrosses, Black-browed Albatrosses, Light-mantled Sooty Albatrosses, Cape Pigeons, Southern Fulmars, Wilson's Storm Petrels, Blue Petrels and Antarctic Petrels. Near the South Shetland Islands, we spot our first icebergs. The Master of the vessel may decide to sail the narrow English Strait between Robert Island and Greenwich Island or Mc Farlane Strait between Greenwich Island and Livingston Island if the conditions are favorable. Then we might be able to enter Antarctic waters in the late evening of the third day and see Aitcho Island at the South Shetlands. If the conditions do not allow us to manoeuvre through the English Strait then we continue

sailing South of Livingston. These volcanic islands or the South Shetlands are windswept and often shrouded in mist and fog, but do offer subtle pleasures. There is a nice variety of flora (mosses, lichens and flowering grasses) and fauna, such as Gentoo Penguins, Chinstrap Penguins and southern Giant Petrels.

Days 4 – 9: Antarctica - We may start our first day in Antarctica with a landing at Hannah Point, where we will find a nice variety of Gentoo Penguins, Chinstraps and southern Giant Petrels, as well as Elephant Seals hauling out on the beach. At Deception Island, we will try to land. Deception itself is a sub ducted crater, which opens into the sea, creating a natural harbour for the ship. Here we find hot springs, an abandoned whaling station, thousands of Cape Pigeons and many Dominican Gulls, Brown and South Polar Skuas and Antarctic Terns.

Wilson's Storm Petrels and Black-bellied Storm Petrels nest in the ruins of the whaling station in Whalers Bay. Good walkers may hike from Baily Head over the ridge of the crater into Whalers Bay, while our ship braves its entrance into the crater through the spectacular Neptune's Bellow into the ring of Deception Island. On our way further South we will sail to Orne Islands with large colonies of Chinstrap Penguins and a beautiful view across the Gerlache Strait or to Cuverville Island, a small precipitous island, nestled between the mountains of the Antarctic Peninsula and Danco Island. It contains a large colony of Gentoo Penguins and breeding pairs of Brown Skuas. In Neko Harbour and Paradise Bay with its myriad icebergs and deep cut fjords, we have the opportunity to set foot on the Antarctic Continent. We shall have the opportunity for zodiac cruising between the icebergs in the inner parts of the fjords.

We sail through the spectacular Lemaire Channel to Petermann Island offering Adelie Penguins and Blue-eyed Shags. We also try to land at Pleneau Island with Elephant Seals and fair chances to encounter Humpback, Minke and Fin Whales. We head south along the Argentine Islands to Crystal Sound, south of the polar circle. The landscape is very impressive with very high mountains and huge glaciers. At the Fish Islands we land at one of the southernmost Adelie Penguin and Blue-eyed Shag colonies in the Antarctic Peninsula. At Detaille Island, south of the Polar Circle, in Crystal Sound we reach probably our farthest south. Sailing north again through Neumayer Channel and Gerlache Strait, we arrive at the Melchior Islands with a very beautiful landscape with icebergs, where we may encounter Leopard Seals, Crabeater Seals and whales.

Days 10 - 11: At sea - On our way north we are again followed by a great selection of seabirds while crossing the Drake Passage.

Day 12: Ushuaia - We arrive in the morning in Ushuaia and disembark.

Antarctic Odyssey

Antarctic Peninsula – Peter I Island – Ross Sea – Sub-Antarctic Islands

OTL26	Jan 16 – Feb 15	30 nights	Ushuaia – Invercargill, New Zealand aboard Ortelius
OTL27	Feb 15 – Mar 17	30 nights	Invercargill, New Zealand - Ushuaia aboard Ortelius

A typical itinerary is illustrated below. All itineraries are for guidance only. Programs may vary depending on local ice and weather conditions, the availability of landing sites and opportunities to see wildlife. The final itinerary will be determined by the Expedition Leader on board. Flexibility is paramount for expedition cruises.

A true Discovery voyage including the southern Antarctic Peninsula, the rarely visited volcanic Peter I Island, exploratory program along the outer fringes of the pack-ice in the Amundsen sea, Roald Amundsen’s starting point from where he gained access to the ice-shelf and finally reached the South Pole in 1911, sailing voyage in the Ross sea, the huts of British explorers Ernest Shackleton and Robert Falcon Scott (ice-permitting) and Macquarie Island – Welcome aboard our Antarctic Odyssey!

Please note: Voyage OTL27 offers the same itinerary as voyage OTL26, but in reverse.

Day 1: Ushuaia - In the afternoon, we embark in Ushuaia, Tierra del Fuego, Argentina, the southernmost city in the world located at the Beagle Channel and sail through this scenic waterway for the rest of the evening.
Voyage OTL27 starts in Invercargill, New Zealand and offers the same itinerary as described hereunder, but in reverse.

Day 2 – 3: at sea

Day 4: We arrive in the Antarctic Peninsula and sail in the early morning through the spectacular Lemaire Channel and land on Pléneau Island, where Elephant Seals haul-out on the beaches. Gentoo Penguins, Kelp Gulls and South Polar Skuas are confirmed breeders. Pléneau Island was first charted by the French Antarctic Expedition of 1903-05 of Jean-Baptiste Charcot and was named after his expedition’s photographer Paul Pléneau.

We will also visit Petermann Island with colonies of Adélie and Gentoo Penguins and Imperial Cormorants (Blue-eyed Shags). Petermann island was named after the German geographer August Petermann who was a member of a German Expedition in 1873-74.

Day 5: Sailing south through the Penola Strait, we cross the Polar Circle and arrive at the Fish Islands. The small islands lying east of Flouder Island are called the Minnows, first charted by the British Graham Land Expedition (1934-37) of John Rymill. Detaille Island was discovered by the French expedition of Charcot (1903-05) and named for a share holder in the Magellan Whaling Company. From 1956 till 1959, The British Antarctic Survey had their “Station W” located on Detaille Island. On both locations we may observe Adélie Penguins and Blue-eyed Shags.

Day 6 – 7: Bellingshausen Sea, where we may see our first pack-ice.

Day 8: Peter I Island or in Norwegian Peter I Øy is an uninhabited volcanic island (19 kilometres long) in the Bellingshausen Sea. It was discovered by Fabian von Bellingshausen in 1821 and was named after the Russian Tsar Peter I. It is claimed by Norway and considered a territory by its own. It is sporadically visited by passenger vessels. On earlier landings made by an Oceanwide office staff member he saw groups of Elephant Seals and colonies of Southern Fulmars and Cape Pigeons.

Day 9 – 14: These days we sail through the Amundsen Sea along and through the outer fringes of the pack-ice, which - depending of ice-conditions - will give us glimpses of the Antarctic Continent, while we take advantage of the west-going Antarctic coastal current. The sailing along and through the ice is very lively, with sightings of single straggling Emperor Penguins, groups of seals on ice-floes, and also Orca's and Minke Whales along the ice-edge, often accompanied by different species of fulmar petrels. If the sea-ice allows, we will try to land on Shephard Island in Marie Byrd Land among colonies of Chinstrap Penguins and South Polar Skua's. Shephard Island was discovered by the US Antarctic Expeditions (USAS) of 1939-41 and was named after one of the promoters of this expedition: John Shephard.

Day 15: We approach the Ross Ice Shelf, a floating mass of land-ice, with a front of 30 meters high. In the Bay of Whales at the eastern side of the shelf, close to Roosevelt Island (named by the American aviator Richard E. Byrd in 1934 for President Franklin D. Roosevelt), Roald Amundsen gained access to the Shelf and ventured to the South Pole, where he finally arrived on 14 December 1911. For us it is perhaps a chance to climb on the shelf as well.

Day 16: Along the Ross Ice Shelf we sail to the west.

Day 17 – 20:

In the Ross Sea we will visit Ross Island, guarded by Mount Erebus, Mount Terror and Mount Bird with all the famous spots which played such an important role in the dramatic British expeditions of the last century such as Cape Royds with the cabin of Ernest Shackleton. If ice-conditions are favourable, we will also visit Cape Evans with the cabin of Robert Falcon Scott; from Hut Point Scott and his men set out for the South Pole. We will further make attempts to visit the US-station McMurdo and Scott Base (New Zealand).

From Castle Rock we will have a great view across the Ross Ice Shelf toward the South Pole. We will have a view into Taylor Valley, one of the Dry valleys, where on our planet you are closest to the conditions on Mars.

Day 21 - 22: Sailing northward along the eastern west coast of the Ross Sea ,we pass by the Drygalski Ice Tongue and the Italian Station in Terra Nova Bay and further cape Hallet.

Day 23: Cape Adare is the place where people for the very first time wintered on the Antarctic Continent. The hut where the Norwegian Borchgrevink stayed in 1899, is surrounded by the largest colony of Adélie Penguins in the World.

Day 24: at sea.

Day 25: We sail along the Balleny Islands, discovered in 1839 by the British captain John Balleny.

Day 26 – 27: at sea.

Day 28: Macquarie Island is a Tasmanian State Reserve and became in 1997 a World Heritage Site. The Australian Antarctic Division has its permanent base on "Macca". The Australian Frederick Hasselborough discovered the island during a voyage, searching for new sealing grounds. The fauna on Macquarie is fantastic with colonies of King and Gentoo and Southern Rockhopper Penguins. The Royal Penguins (almost one million breeding pairs!) and Macquarie Shags are endemic species. Elephant Seals are also present, as well as various fur seals species such as the New Zealand Fur Seal.

Day 29 – 30: at sea.

Day 31: We arrive in Invercargill (New Zealand) where passengers depart for their homebound journey.

Voyage OTL27 ends in Ushuaia, Argentina and starts in Invercargill and offers the same itinerary as described above, but in reverse.



OCEANWIDE EXPEDITIONS

Day by Day Itinerary

Atlantic Odyssey 2012/2013

All itineraries are for guidance only. Programs may vary depending on local ice and weather conditions and in order to take advantage of opportunities to see wildlife. Flexibility is paramount for expedition cruises.

Atlantic Odyssey

PLA33 March 29 – April 29

31 nights

Ushuaia – Ascension Island
aboard Plancius



Day 1: Ushuaia (March 29) - Ushuaia - In the afternoon, we embark in Ushuaia, Tierra del Fuego, Argentina, the southernmost city in the world located at the Beagle Channel and sail through this scenic waterway for the rest of the evening.

Days 2 & 3: At sea - During these two days we sail across the Drake Passage. When we cross the Antarctic Convergence, we arrive in the circum-Antarctic upwelling zone. In this area we may see Wandering Albatrosses, Grey Headed Albatrosses, Black-browed Albatrosses, Light-mantled Sooty Albatrosses, Cape Pigeons, Southern Fulmars, Wilson's Storm Petrels, Blue Petrels and Antarctic Petrels. Near the South Shetland Islands, we spot our first icebergs.

Day 4: Deception Island - At Deception Island, we will try to land at Baily Head home to a colony of ten thousands Chinstrap Penguins (please note this landing is not always guaranteed and is only possible in good weather conditions). Good walkers may hike from Baily Head over the ridge of the crater into Whalers Bay, while our ship braves its entrance into the crater through the spectacular Neptune's Bellow into the ring of Deception Island. Deception itself is a subducted crater, which opens into the sea, creating a natural harbour

for the ship. Here we find hot springs, an abandoned whaling station, many Dominican Gulls, Brown Skuas and Antarctic Terns. Wilson's Storm Petrels and Black-bellied Storm Petrels nest in the ruins of the whaling station in Whalers Bay.

Day 5: Antarctica – continental landing - If the sea ice conditions allow we will try and reach Hope Bay or Brown Bluff at the Northern tip of the Antarctic Continent. In this area chances are good for encounters with Adelie Penguins, Weddell Seals, Leopard Seals and Orcas.

Day 6: Paulet Island - If ice conditions allow, we will sail to Paulet Island where we will observe the last individuals of a large Adelie Penguin colony near the ruins of the Nordenskjöld Expedition from the beginning of the 20th century. Depending on the sea ice we sail east or west of the Danger Islands to the north.

Day 7: At sea - We will sail towards the South Orkney Islands. Our exact navigational course will be determined by the prevailing ice conditions, in terms of both extent of sea ice and density of icebergs, which vary from year to year.

Day 8: South Orkney Islands - We are planning on a visit to Orcadas station, an Argentinean base located in the South Orkney Islands. The friendly base personnel will show us their facilities and we can enjoy the wonderful views of the surrounding glaciers.

Day 9: At sea - On our way to South Georgia, we witness a multitude of Albatrosses, Petrels and Fulmars.

Days 10 – 12: South Georgia - In South Georgia we begin our visit with zodiac excursions in the magnificent Drygalski Fjord and Larsen Harbour. In Cooper Bay we will observe Chinstrap Penguins and Macaroni Penguins and breeding Light-mantled Sooty Albatrosses. On Salisbury Plain, we will see a huge King Penguin colony, elephant seals and fur seals. On



Day by Day Itinerary

Prion Island in the Bay of Isles we can see breeding Wandering Albatrosses. At the end of our time in South Georgia we will visit the abandoned whaling settlement in Grytviken, where now the penguins walk through the streets, and King Edwards Point where the grave of Shackleton lies.

Days 13 – 17: At sea - In the Westerlies we have a pleasant tailwind. On both sides of the Antarctic Convergence, we observe many species and great numbers of Antarctic and sub-Antarctic seabirds.

Day 18: Gough Island - Today we plan to approach the unique Gough Island for zodiac cruising around the island, as always weather permitting. In previous years we managed to circumnavigate all but four miles of the 33 mile circumference of the island in the ship, saw spectacular scenery and an unprecedented abundance of wildlife. We felt very privileged to be among the few visitors who have been able to experience Gough and in particular, to see it at such close quarters and in such favorable conditions. We hope to be lucky to repeat this unique experience with you.

Days 19 – 21: Tristan da Cunha - In the Tristan da Cunha archipelago we plan to call on the settlement at the west side of the main island. We will also try to make landings at Nightingale Island and Inaccessible Island with millions of seabirds ranging from Yellow-nosed Albatrosses to Brown Noddies. We allow one day in reserve for bad weather. Please note that we will try and approach for landings, however due to the weather conditions this is not always possible.

Since we began our Atlantic Odyssey's (1998) we failed during 30% of the voyages to make landings in the Tristan da Cunha archipelago, due to adverse weather.

Day 22 – 25: At sea - We now enter sub-tropical waters with their own species of seabirds and dolphins.

Day 26 – 28: St. Helena - St. Helena has a good anchorage and landing site. On this island, we will have ample opportunities to enjoy local culture, pleasant climate, and endemic plants and birds. We will visit the place where Napoleon lived in exile. There will be opportunities to explore the Island on your own and for snorkelling; in the shallow surf where we can find a lot of fishes.

Day 29 – 30: At sea

Day 31 -32: Ascension Island (April 28 - 29) - Ascension Island is a dry volcanic island with a moist and richly vegetated top. The Sooty Tern (wide-awake) colony sometimes consists of more than 1 million breeding pairs. We will try to climb the moist summit of Ascension Island and make a zodiac-cruise around Boatswain Bird Island offering also great opportunities for snorkelling. We may witness egg-laying sea turtles coming ashore at night. Some of our passengers may disembark and fly with the scheduled RAF (Royal Air Force) flight to Brize Norton in Oxfordshire, UK. Others may proceed with the voyage to the Cape Verdes. In the evening the vessel will depart from Ascension Island.

Atlantic Odyssey

PLA34

April 29 – May 05

06 nights

Ascension Island – Praia, Cape Verdes
aboard Plancius

Days 33 (April 30) – 37: At sea - We witness the northbound spring migration of northern birds like Arctic Terns and Long-tailed Skuas who join us in crossing the Equator (“the Line”).

Day 38: Praia (May 05) - Passengers will disembark at 9.00 hours* Those who will fly from Praia on the night of May 05 / 06 will be offered an excursion in Praia on Sao Tiago.

We shall make an excursion to Cidade Velha, steeped in history, and shall observe the massive fortress on the hill, built to deter English marauders in the period when the Crowns of Portugal and Spain were united and Portuguese possessions became as fair game to the likes of Drake and Raleigh as were Spanish ones. We shall see the ruins of the Cathedral, the oldest Christian Church in the tropics, and the slave whipping post in the main square. The village is well watered and there are plantations of sugar cane, which support a rum distillery, and several species of birds. We shall have another guided stroll around the City of Praia, which is the capital of the Cape Verdes, and which has given rise to a unique variety of folk music, which we shall hear as we pass the various bars!

* For the disembarking passengers we will reserve a few rooms in a hotel in Praia, where we collect their luggage and where they can freshen up at the end of their excursion before travelling to the airport in the night or to their hotels if they are staying longer in Praia.



OCEANWIDE
EXPEDITIONS

Day by Day Itinerary

Pelagic West Africa

PLA35

May 05 – May 13

08 nights

Praia, Cape Verdes – Funchal, Madeira
aboard Plancius



The Cape Verde Islands lie 375 miles off the coast of west Africa and are all volcanic in origin. The islands display a variety of landscapes from the spectacular rugged mountains of Santiago, Santo Antao and São Nicolau to the flat salt pans of Sal and Maio. The Cape Verde Islands were ‘discovered’ by the Portuguese between 1455 and 1461. An interesting account of the history of the Cape Verde can be found in the museum in central Praia. The isolation of the Cape Verde islands has resulted in a number of endemic species, particularly of birds including Cape Verde Swift, Raso Lark, Cape Verde Warbler and Cape Verde Sparrow. Another point of interest for naturalists is that on 16th January 1832, Charles Darwin landed on Santiago (recorded as St. Jago in his diary) and noted a layer of white shells in a cliff face at Porto Praya. An observation which later led to one his less well known theories of ‘raising continents’ and ‘sinking ocean floors’!

Please note that the following itinerary should be treated as a guide only, not an exact program. Flexibility is the key to all our cruises and our exact route and program will depend on such factors as weather conditions, wildlife encounters, the experience of the expedition leader and the advice of the ship’s captain and crew.

Day 1 (May 5): In Praia passengers embark MV Plancius at 14.00 hours. Praia is located on the southern island of Santiago, one of the largest of the 10 islands (plus 8 islets) that make up the Cape Verde archipelago. From Praia we cruise along the west coast of Santiago and north towards the small island of Raso, approximately 120 miles from Santiago, a journey that will take the rest of the day and much of the night. We will, however, be crossing prime seabird and cetacean waters and there will be plenty to enjoy en route, especially in the evening when the shearwaters and other seabirds begin to return to the islands after a day feeding out at sea. With the volcanic cone of Fogo off to our port side and flying fish scuttling over the waters surface in front of our ship, we will be looking out for the Cape Verde Shearwater - an endemic race of Cory’s Shearwater-plus North Atlantic Little (Boyd’s) Shearwater, Fea’s Petrel and Bulwer’s Petrel. These waters are also home to an exciting variety of cetaceans including Short-finned Pilot Whale, Bottlenose Dolphin, Common Dolphin and perhaps Pan-tropical Spotted Dolphin and Sperm Whale.

Day 2: We will spend this morning circumnavigating the small rugged island of Raso, located in the north-west of the archipelago between the larger islands of São Nicolau and São Vicente. Cape Verde Shearwaters are common here and nest in large numbers on the island along with Little (Boyd’s) Shearwater and both Madeira and White-faced Storm Petrels. Our main target this morning, however, will be the beautiful and graceful Red-billed Tropicbird which also nest on Raso and can be seen here and gliding along the precipitous slopes of Branco. Brown Boobies are another key species frequently seen around the islands. Locating one of the endemic Raso Larks from the zodiacs has been proven to be a possibility. Mid-day we head northeast, away from the Cape Verde Islands and towards the continental shelf off West Africa. We have a chance to see the Western Palearctic’s only Magnificent Frigate birds. There will be plenty of commoner seabirds to enjoy, plus and opportunities to look for dolphins, pilot whales and perhaps some of the larger cetacean species.

Day 3: At sea. Today will be spent mostly over deep water cruising from the Cape Verde Islands to the West African shelf edge off Mauritania. Seabirds and cetaceans will be the order of the day and we hope for an interesting selection of seabirds as we head east.

Days 4 – 5: We reach the shelf in the morning near Nouadhibou and will spend 2 days cruising north along the shelf edge off Mauritania and Western Sahara. Here we should expect the unexpected, for these rich waters are rarely visited by



Day by Day Itinerary

naturalists. We hope that by 'chumming' (a potent mix of fish scraps and oil) at key points along our route we will enjoy close views of plenty of the commoner species plus, we hope, a few surprises! All four species of Northern Skua - Great, Arctic, Long-tailed and Pomarine - should be common. Groups of Grey Phalaropes are also a common sight here, along with flocks of Sabine's Gulls, European Storm-petrel, Kittiwakes and Black Terns. These northern breeders are joined from the south by Wilson's Storm-petrels, plus Sooty Shearwater and - for the fortunate - perhaps even South Polar Skua; a species recently shown to head north into these waters during our spring and summer months. Any of the rarer seabirds breeding on the Macronesian Islands are possible, along with an exciting range of cetaceans which may include Fin Whale, Sperm Whale, Northern Bottlenose Whale, Curvier's beaked Whale, Common Dolphin and the outside chance of rarer species such as Rough-toothed Dolphin, Blainville's Beaked Whale and Pygmy Sperm Whale. Other pelagic wildlife to look out for includes Sunfish and even the occasional turtle.

Day 6:

We will explore the deepwater channels around Gomera in the Canary Islands. A known hot spot for whales and dolphins. The inaugural 2011 voyage saw Sperm and Short-finned Pilot Whales plus a number of dolphins including Rough-toothed. We will now be in range for Barolo's Shearwater, another recent species split (from Little Shearwater) plus we should expect more Cory's Shearwaters, Bulwer's Petrels and White-faced Storm-Petrels today too.

Day 7: In the afternoon we reach the remote Selvagens, where we first see Selvagen Pequina and where we will spend an evening cruising around Selvagen Grande. These isolated islands, which lie 80 miles north of the Canaries, are perhaps the ultimate destination for anyone interested in Western Palaeartic 'tube-noses'. Huge numbers of petrels and shearwaters breed here including approximately 15,000 Cory's Shearwaters, 5,000 Bulwer's Petrels, 2,000 Little (Barolo's) Shearwater, 60,000 White-faced Storm-petrels and 1,500 pairs of Madeira Storm-petrels. Since many of these species gather off shore in the evening before returning to their nest sites after dark, our evening cruise here should be one of the ornithological highlights of this holiday. If conditions permit we will launch the zodiacs for an evening zodiac cruise to enjoy the seabirds and cetaceans at close range.

Day 8: In the second half of the day we will sail by the Desertas Islands. The Desertas belong to the Madeira archipelago. In 1990 they became a Nature Reserve, comprising the islands themselves and the surrounding sea to a depth of 100 metres. The reserve is divided into two protected zones of which the southern half of **Deserta Grande and Bugio are strictly forbidden to visitors even by boat**. On Deserta Grande there is a permanent research station with three wardens, who are the only human inhabitants on the islands today. The Desertas were designated as Special Protection Area for their important seabird populations. Cory's Shearwater, Bulwer's Petrel and Madeira Storm Petrel all breed here along with Fea's or Desertas Petrel. We will observe an exciting selection of cetaceans including Common Dolphin, Bottlenosed Dolphin, Short-finned Pilot Whale and perhaps a Fin or early Bryde's Whale. Sperm Whales are the mostly frequently seen large whales in these waters and spend most of the year here feeding on squid from the deep water canyons and trenches that surround the islands. A population of less than 100 Mediterranean Monk Seals also live around the Desertas.

Day 9 (MAY 13): The morning will find us about 20 n.miles north of Madeira in an area where Zino's Petrel (endemic for Madeira) is known to forage. Midday we arrive in Funchal, the capital of Madeira, where you will disembark the MV Plancius and transfer on your own to the airport to catch an afternoon flight home (flight not included in cruise rate).